



## Skeletmemorie

### Doelstellingen aflevering

Leerlingen weten aan het eind van de les:

- Dat een skelet ons lichaam stevigheid geeft
- Een aantal belangrijke botten: schedel, ribben, sleutelbeen en heupbeen

### Uitwerking

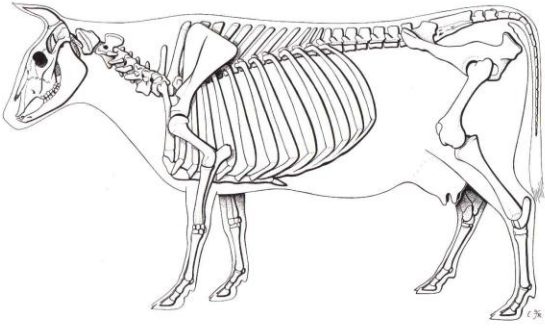
Op de volgende pagina's staan skeletten van verschillende dieren.

Allereerst kunnen de leerlingen langs de rode randen de plaatjes uitknippen.

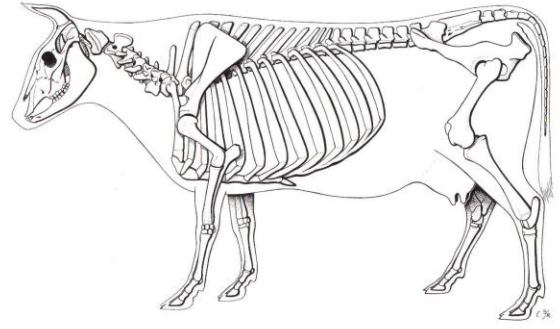
Daarna kunnen zij memorie spelen en de juiste duo's vinden.

Herkennen zij ook van welk dier het afgebeelde skelet is?

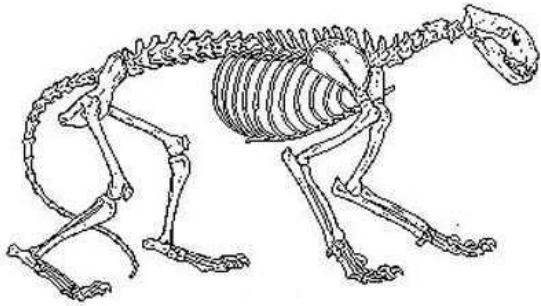
Veel plezier!



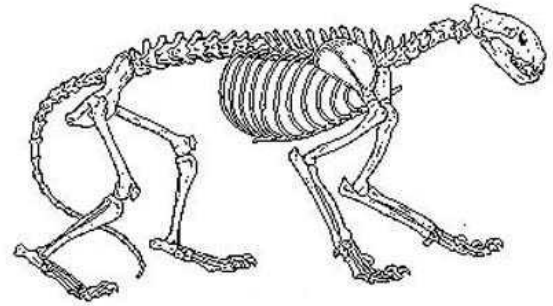
KOE



KOE



TIJGER



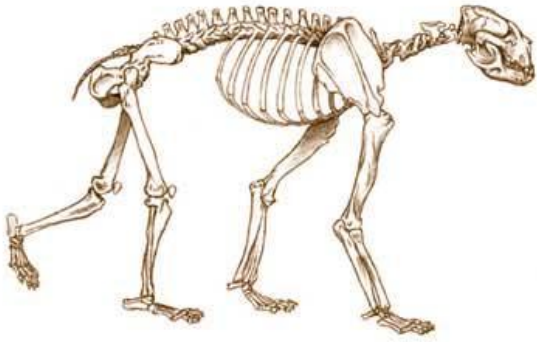
TIJGER



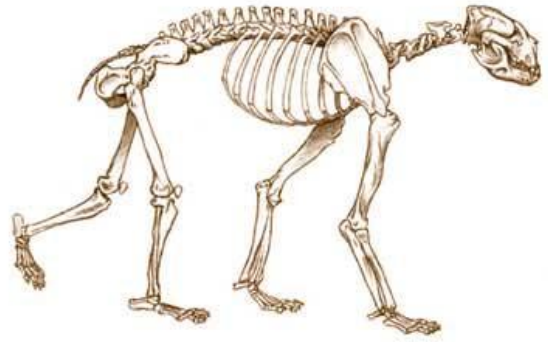
AAP



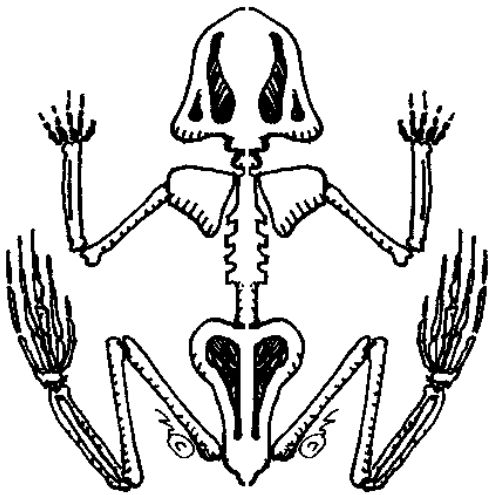
AAP



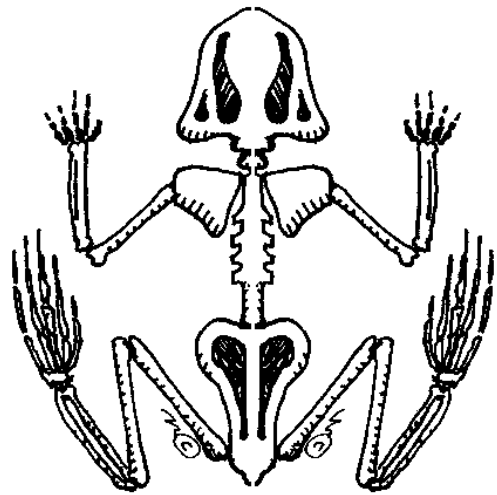
BEER



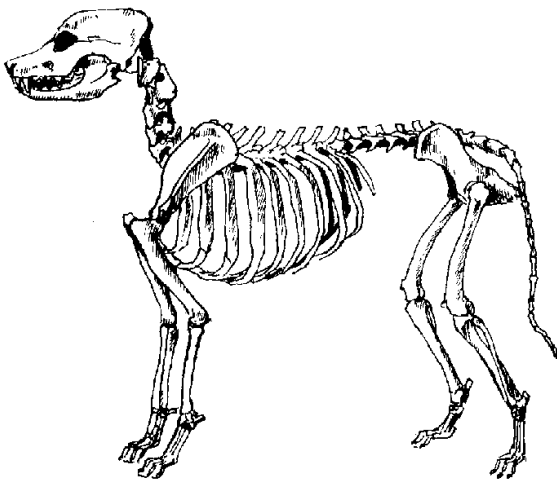
BEER



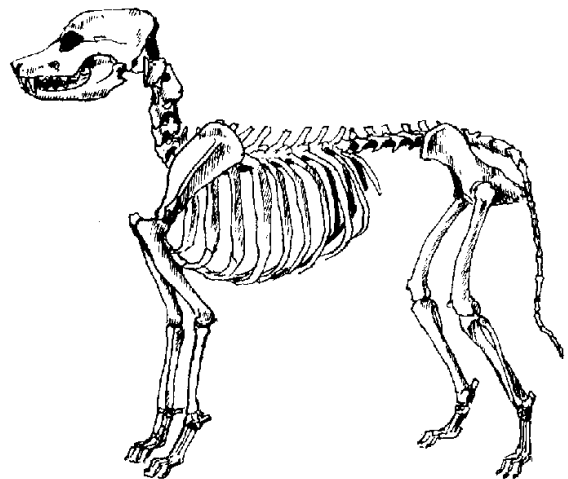
KIKKER



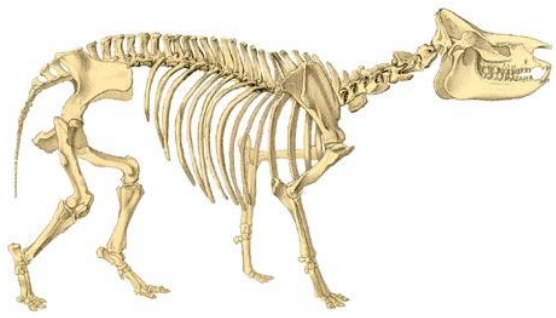
KIKKER



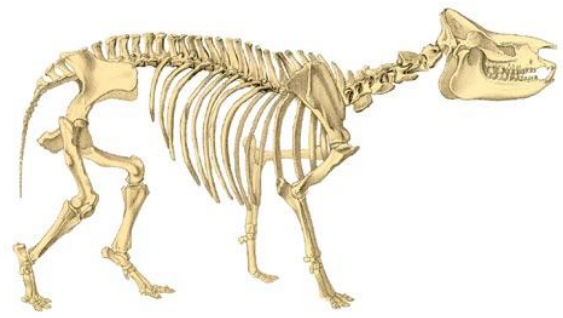
HOND



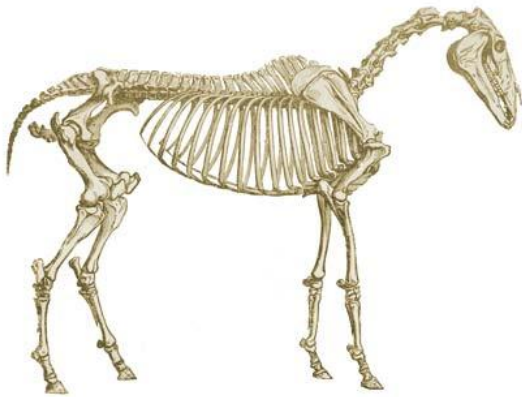
HOND



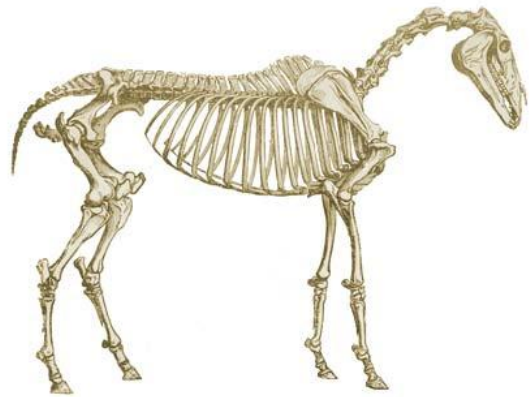
NEUSHOORN



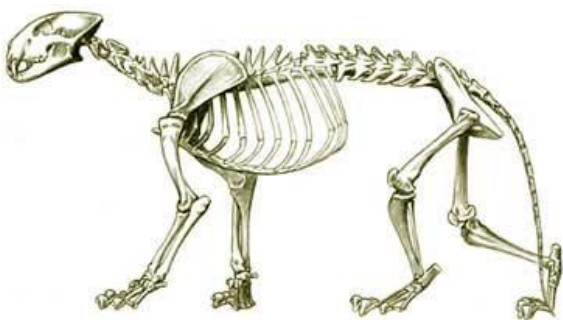
NEUSHOORN



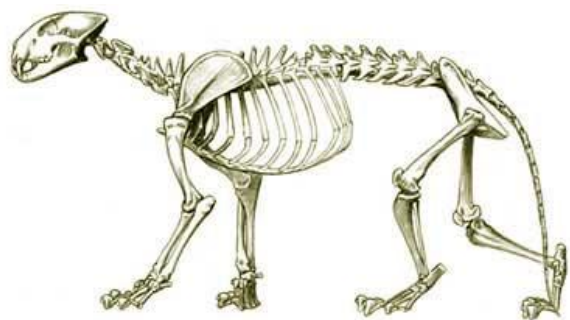
PAARD



PAARD



LEEUEW



LEEUEW